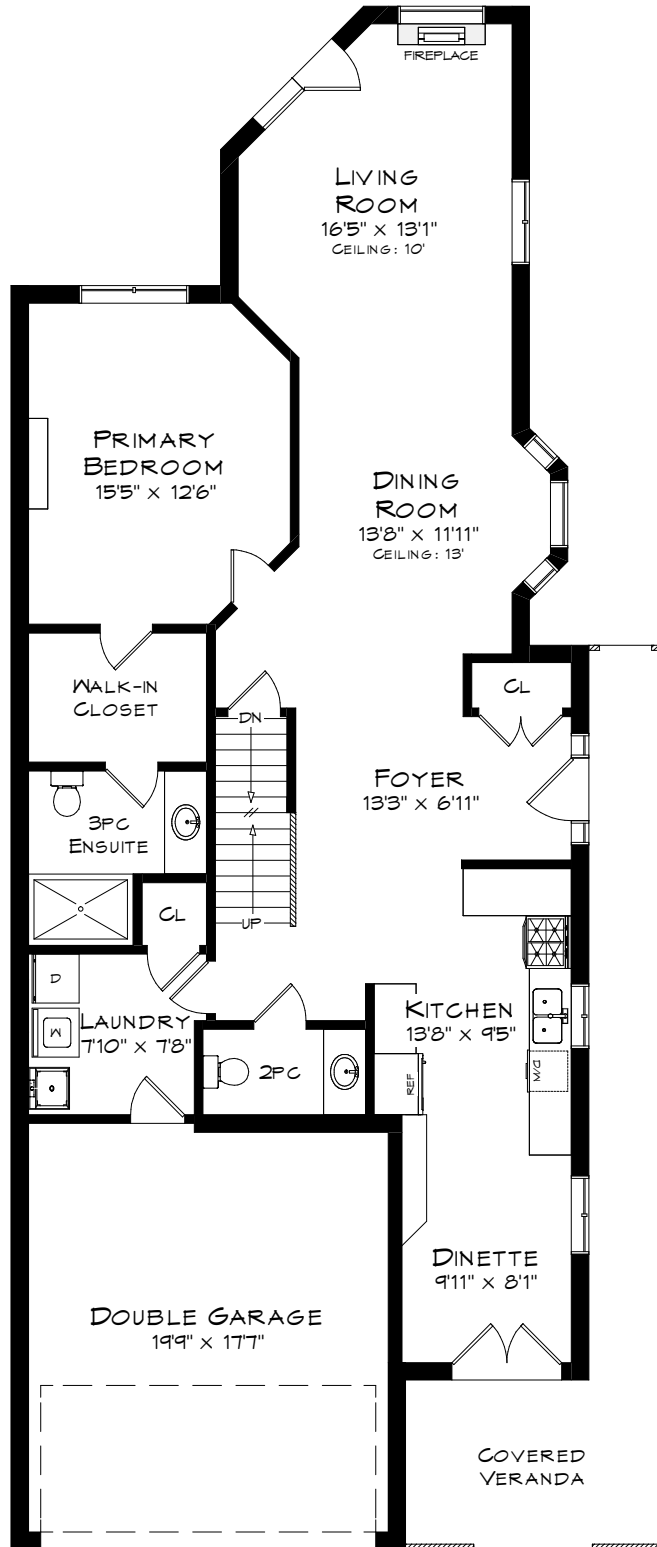
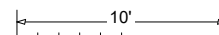


# 2304 SOVEREIGN STREET

TOTAL SQUARE FOOTAGE  
3,536 SQ.FT.



MAIN LEVEL  
1,361 SQUARE FEET  
+ 370 SF (GARAGE)

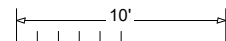


Measurements may not be 100% accurate  
and should be used as a guideline only.  
September - 2024

# 2304 SOVEREIGN STREET



UPPER LEVEL  
769 SQUARE FEET



Measurements may not be 100% accurate  
and should be used as a guideline only.  
September - 2024